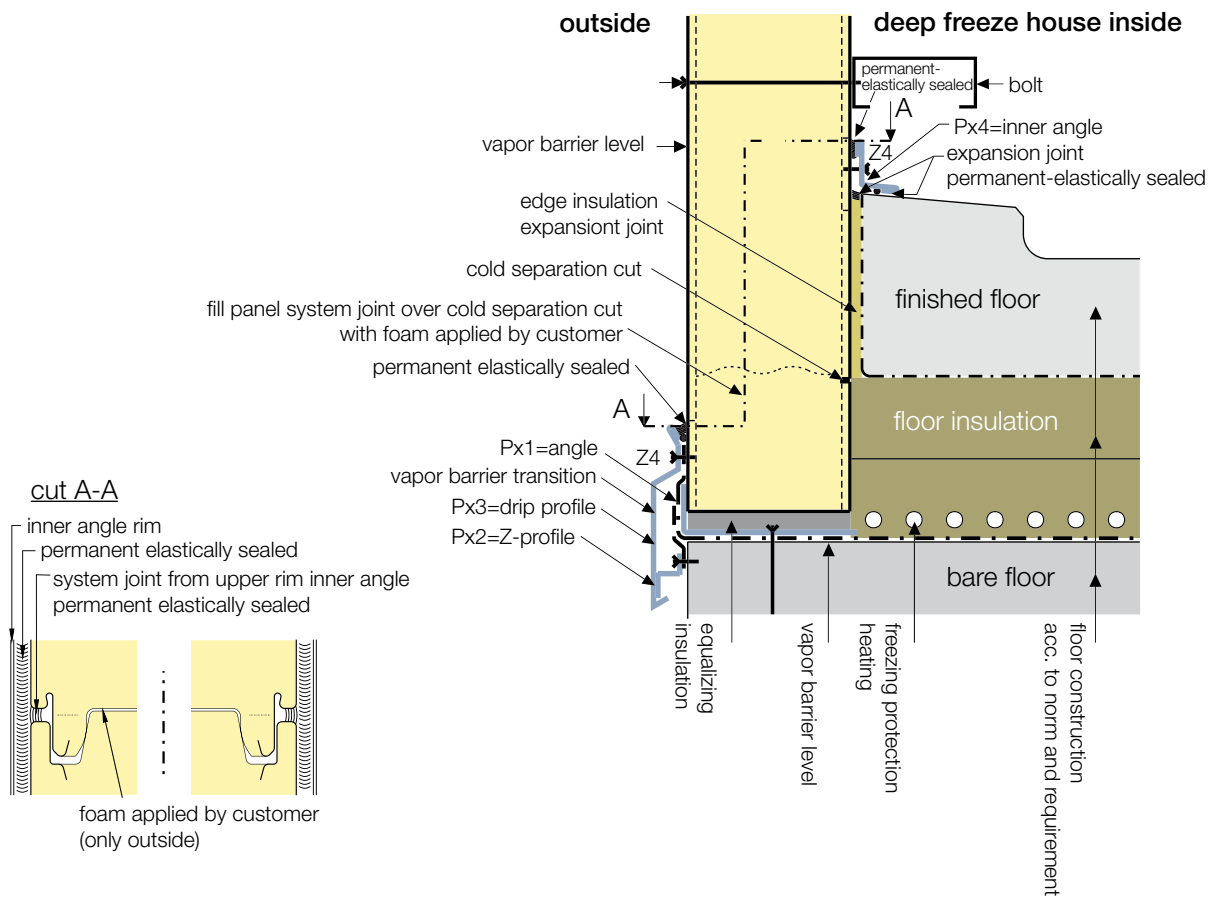


ems-isolier® coldstore panels

construction details

// Detail No. 1 – Foot facade



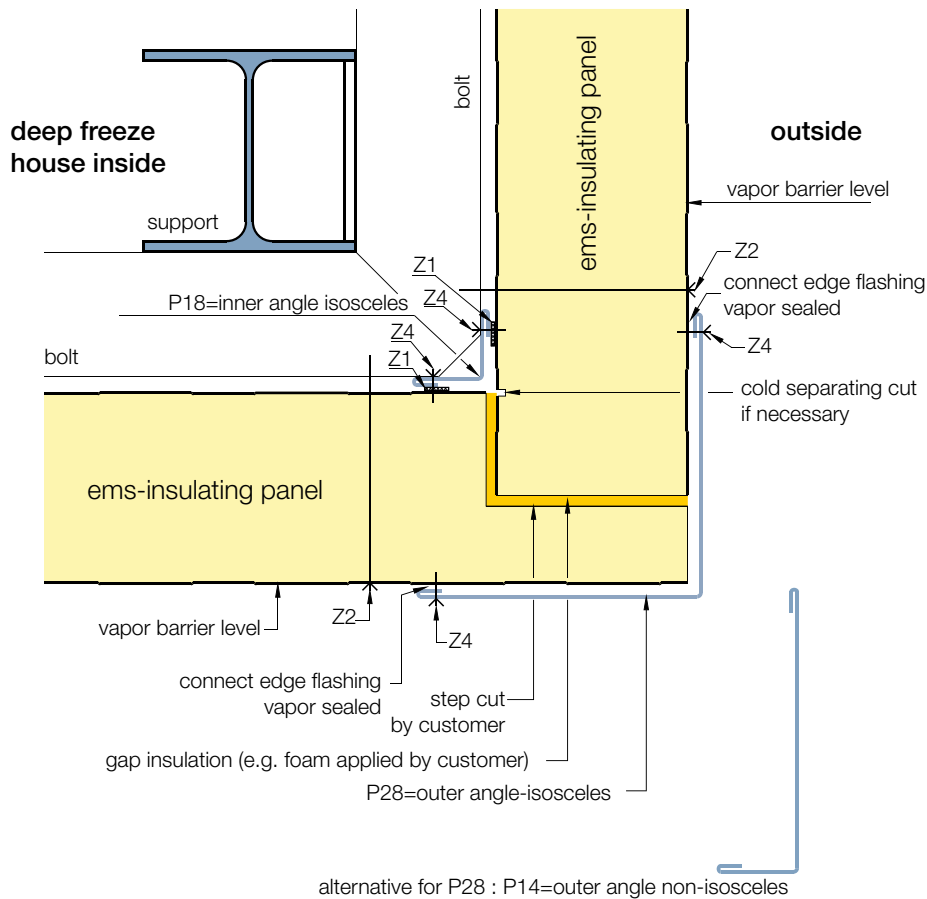
legend					
item	description	article no.	item	description	article no.
P x 1	angle	if necessary	Z 2	fastener e.g.: JA3-6,5xL-E/JZ3-6,3xL-E	
P x 2	Z-profile	if necessary	Z 4	connector e.g.: JA3-6,5x19-E16/nut	
P x 3	drip profile	if necessary			
P x 4	inner angle	if necessary			

Character, arrangement, quantity of the fastener, connector, belts etc.: designated according to statics and technical regulations. General remark (liability): The indications in these schematic diagrams serve for description. Conventions concerning certain characteristics or certain applications always require special written agreements. Status 07/2018 – subject to technical modifications.

ems-isolier® coldstore panels

construction details

// Detail No. 2 – Edge



legend

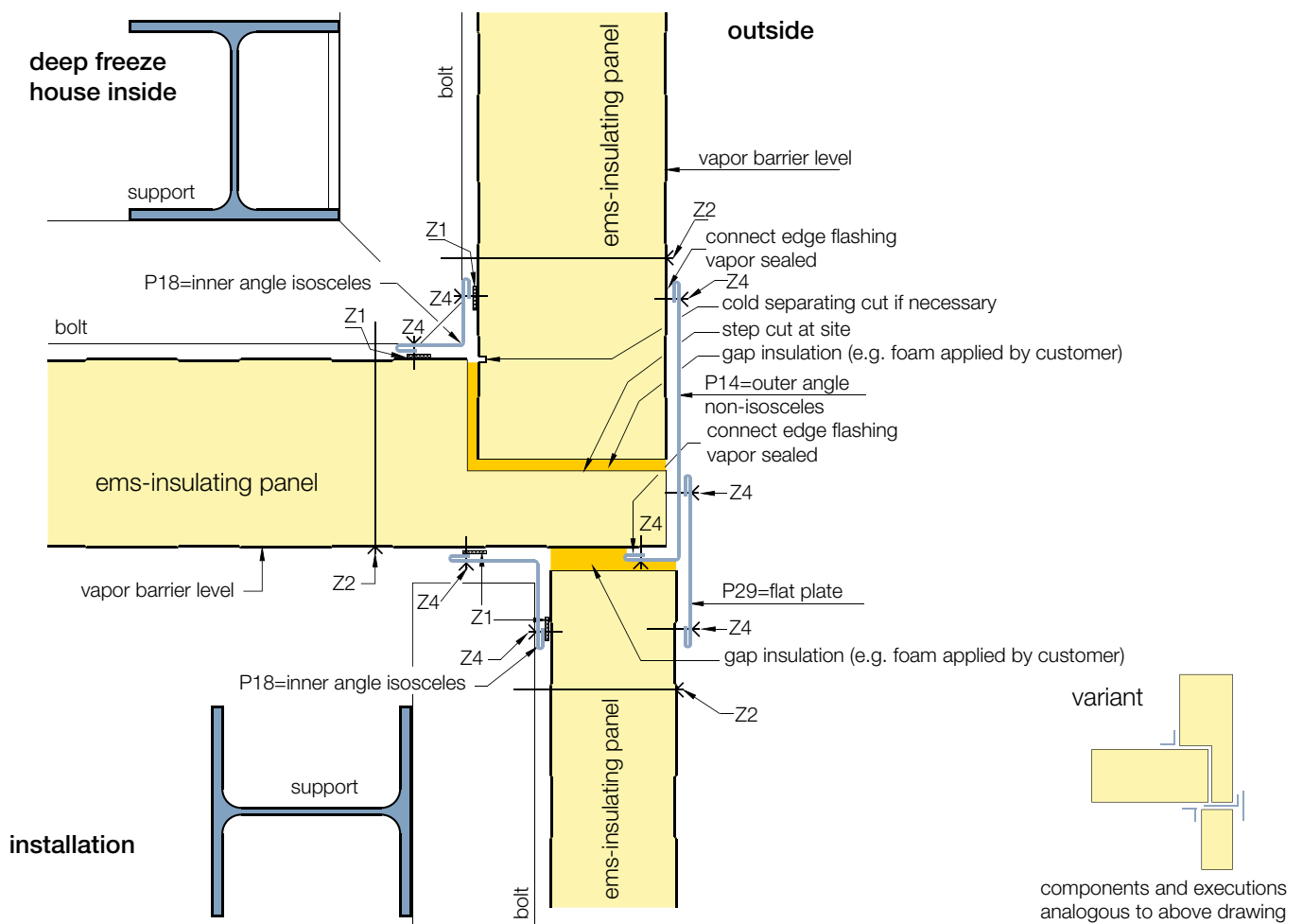
item	description	article no.	item	description	article no.
P 14	outer angle non-isosceles	71031 ff.	Z 1	compression gasket self-adhesive on one side e.g.: 15x10/2	
P 18	inner angle isosceles	71140 ff.	Z 2	fastener e.g.: JA3-6,5xL-E/JZ3-6,3xL-E	
P 28	outer angle isosceles	71041 ff.	Z 4	connector e.g.: JA3-6,5x19-E16/nut	

Character, arrangement, quantity of the fastener, connector, belts etc.: designated according to statics and technical regulations. General remark (liability): The indications in these schematic diagrams serve for description. Conventions concerning certain characteristics or certain applications always require special written agreements. Status 07/2018 – subject to technical modifications.

ems-isolier® coldstore panels

construction details

// Detail No. 3 – Edge with T-connection



legend

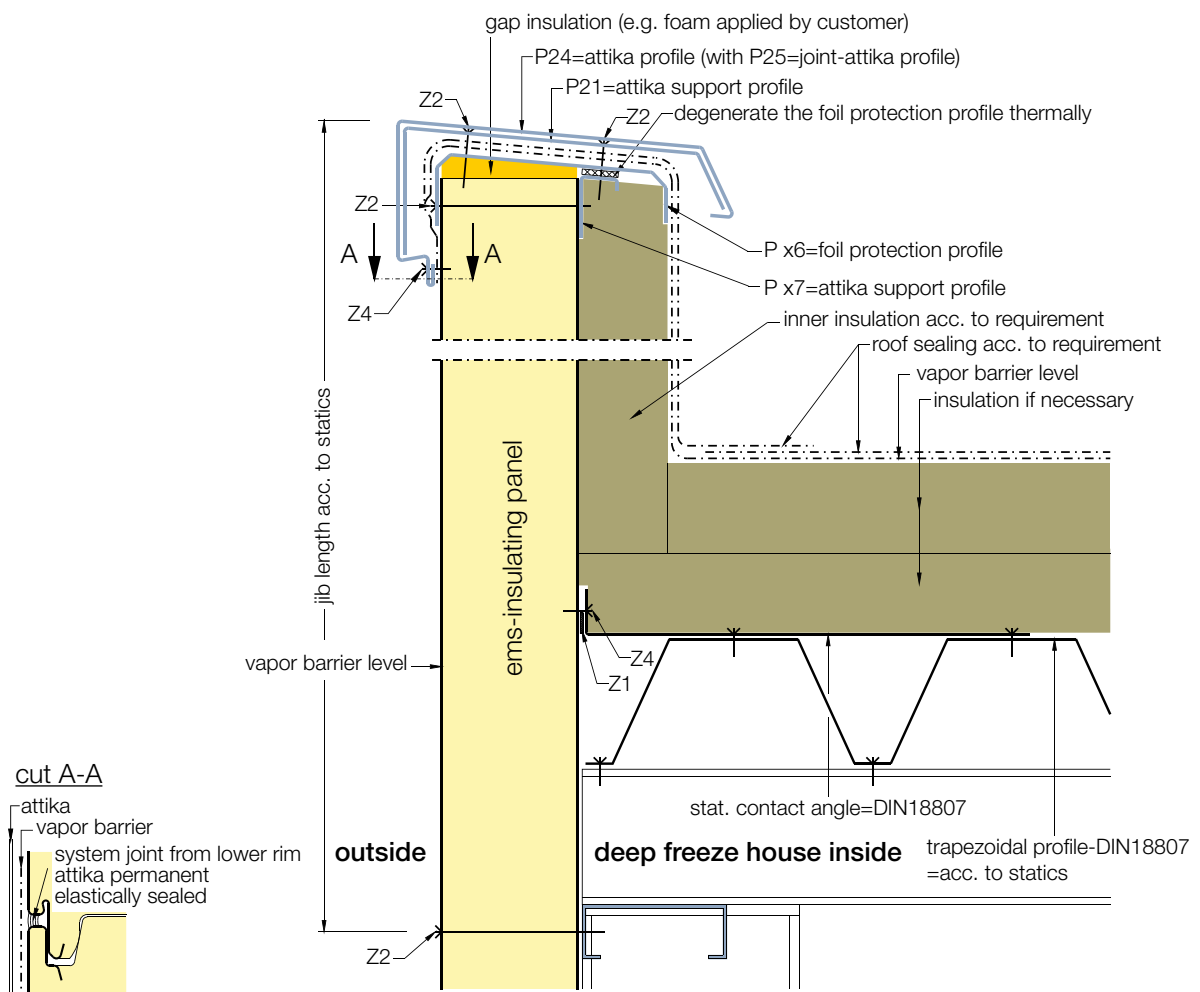
item	description	article no.	item	description	article no.
P 14	outer angle non-isosceles	71031 ff.	Z 1	compression gasket self-adhesive on one side e.g.: 15x10/2	
P 18	inner angle isosceles	71140 ff.	Z 2	fastener e.g.: JA3-6,5xL-E/JZ3-6,3xL-E	
P 29	flat plate	71050 ff.	Z 4	connector e.g.: JA3-6,5x19-E16/nut	

Character, arrangement, quantity of the fastener, connector, belts etc.: designated according to statics and technical regulations. General remark (liability): The indications in these schematic diagrams serve for description. Conventions concerning certain characteristics or certain applications always require special written agreements. Status 07/2018 – subject to technical modifications.

ems-isolier® coldstore panels

construction details

// Detail No. 4 – Attika



legend

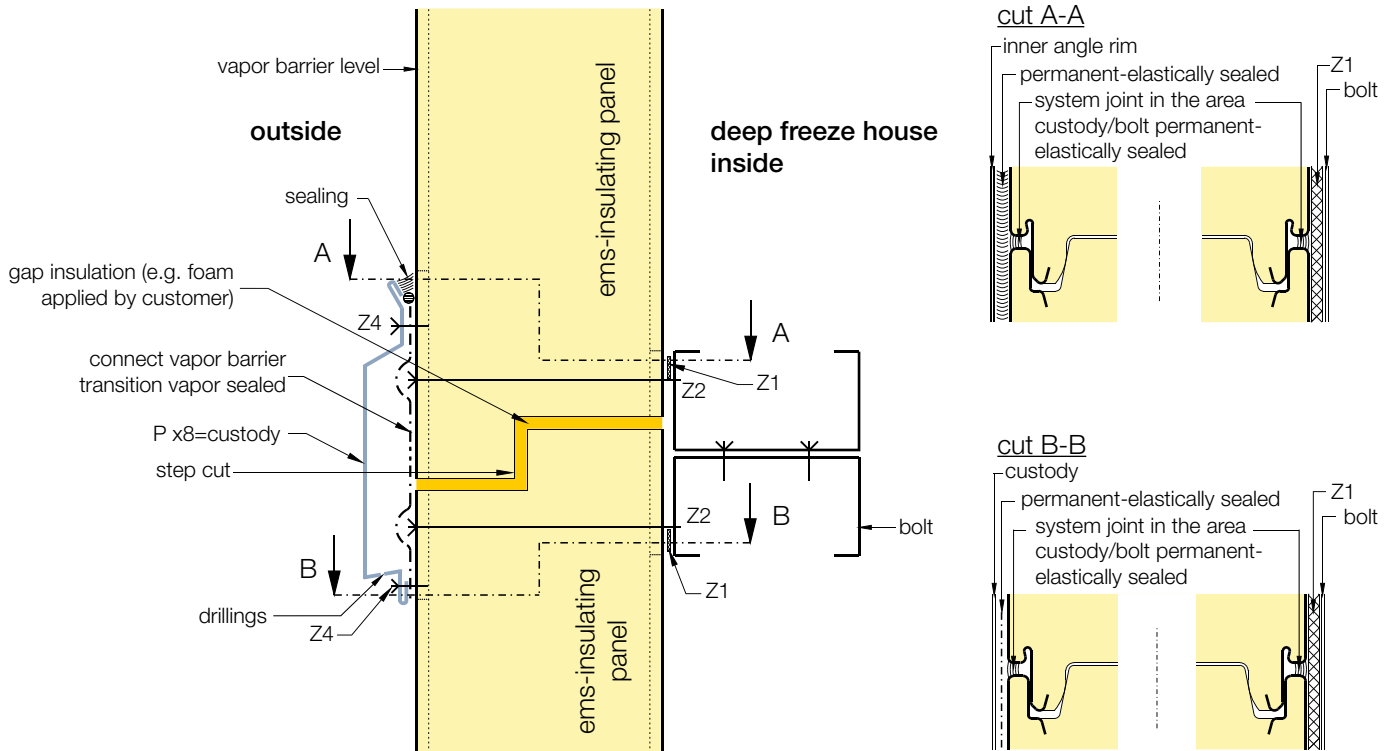
item	description	article no.	item	description	article no.
P x6	foil protection profile	if necessary	P 25	joint attika profile	71161 ff.
P x7	attika support profile	if necessary	Z 1	compression gasket self-adhesive on one side e.g.: 15x10/2	
P 21	attika support profile	71191 ff.	Z 2	fastener e.g.: JA3-6,5xL-E/JZ3-6,3xL-E	
P 24	attika profile	71186 ff.	Z 4	connector e.g.: JA3-6,5x19-E16/nut	

Character, arrangement, quantity of the fastener, connector, belts etc.: designated according to statics and technical regulations. General remark (liability): The indications in these schematic diagrams serve for description. Conventions concerning certain characteristics or certain applications always require special written agreements. Status 07/2018 – subject to technical modifications.

ems-isolier® coldstore panels

construction details

// Detail No. 5 – Transverse joint



legend

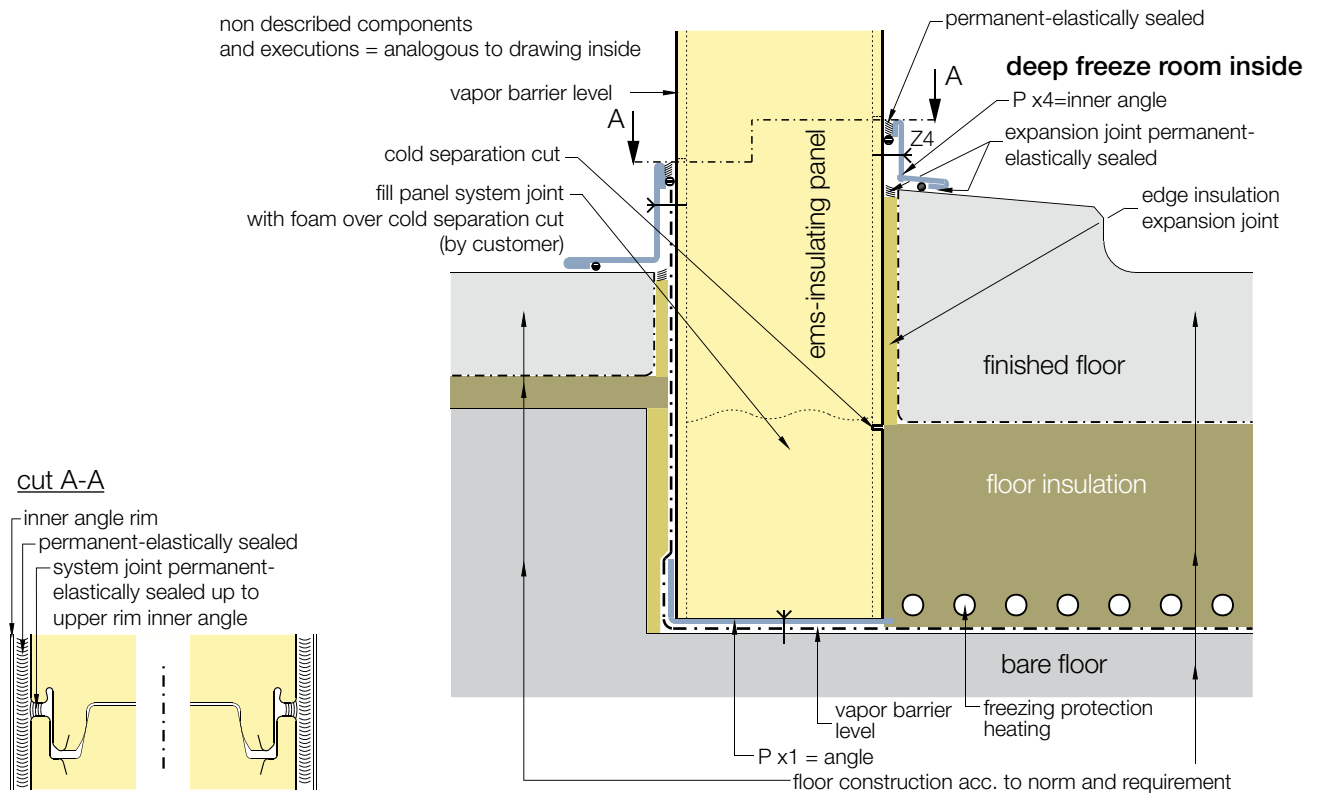
item	description	article no.	item	description	article no.
P x8	custody	if necessary	Z 2	fastener e.g.: JA3-6,5xL-E/JZ3-6,3xL-E	
Z 1	compression gasket self-adhesive on one side e.g.: 15x10/2		Z 4	connector e.g.: JA3-6,5x19-E16/nut	

Character, arrangement, quantity of the fastener, connector, belts etc.: designated according to statics and technical regulations. General remark (liability): The indications in these schematic diagrams serve for description. Conventions concerning certain characteristics or certain applications always require special written agreements. Status 07/2018 – subject to technical modifications.

ems-isolier® coldstore panels

construction details

// Detail No. 6 – Foot with floor insulation



legend

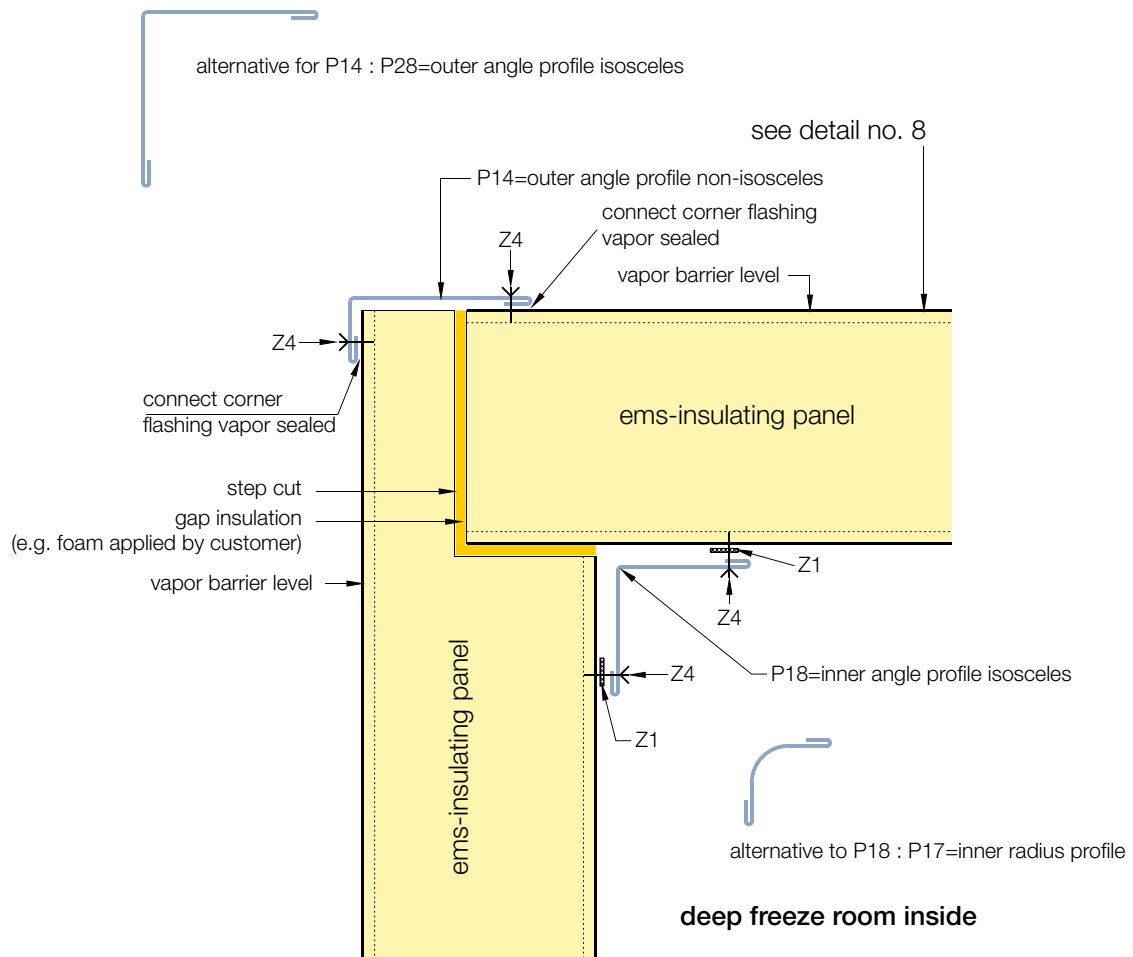
item	description	article no.	item	description	article no.
P x1	angle	if necessary	Z 4	connector e.g.: JA3-6,5x19-E16/nut	
P x4	inner angle	if necessary			

Character, arrangement, quantity of the fastener, connector, belts etc.: designated according to statics and technical regulations. General remark (liability): The indications in these schematic diagrams serve for description. Conventions concerning certain characteristics or certain applications always require special written agreements. Status 07/2018 – subject to technical modifications.

ems-isolier® coldstore panels

construction details

// Detail No. 7 – Wall-ceiling connection



legend

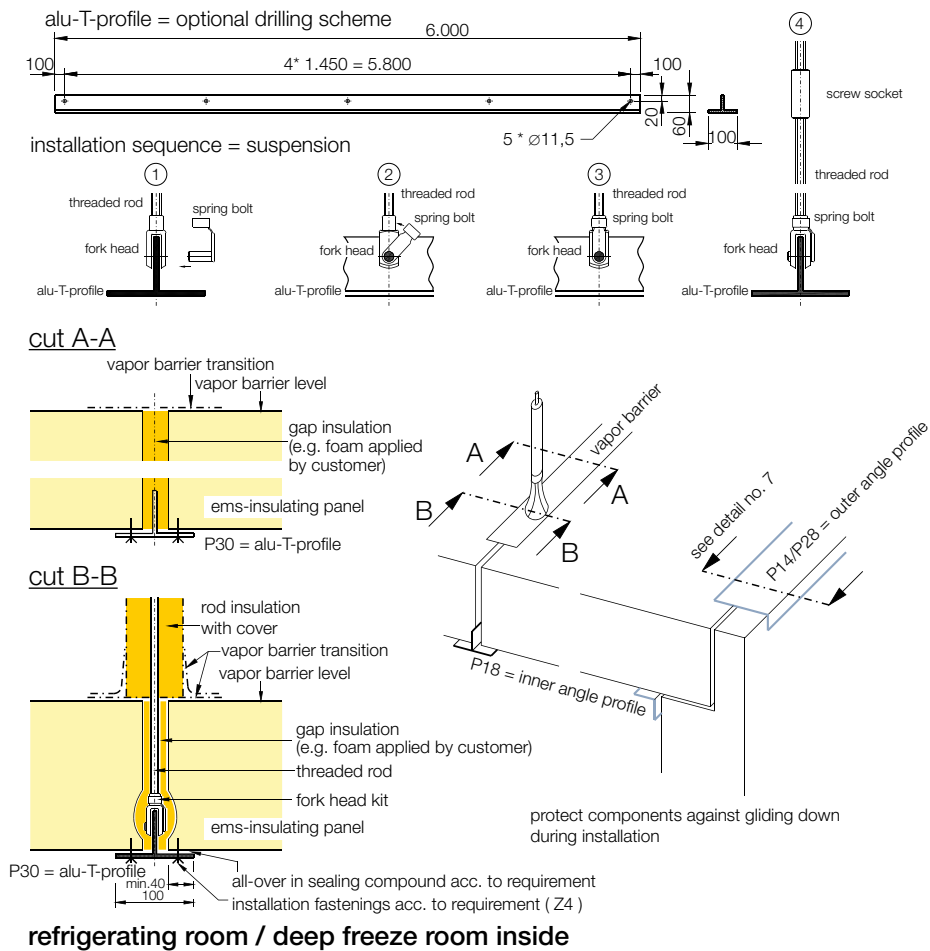
item	description	article no.	item	description	article no.
P 14	outer angle non-isosceles	71031 ff.	P 28	outer angle profile isosceles	71041 ff.
P 17	inner radius profile	71136	Z 1	compression gasket self-adhesive on one side e.g.: 15x10/2	
P 18	inner angle isosceles	71140 ff.	Z 4	connector e.g.: JA3-6,5x19-E16/nut	

Character, arrangement, quantity of the fastener, connector, belts etc.: designated according to statics and technical regulations. General remark (liability): The indications in these schematic diagrams serve for description. Conventions concerning certain characteristics or certain applications always require special written agreements. Status 07/2018 – subject to technical modifications.

ems-isolier® coldstore panels

construction details

// Detail No. 8 – Lowered ceiling



legend

item	description	article no.	item	description	article no.
P 30	alu-T-profile	25660	P 33	fork head RS/LS	20797/20800
P 31	threaded rod M 10 DIN 975 RS/LS	13262/13263	P 34	spring bolt	20798
P 32	screw socket M 10 RS/LS	13264/13265	Z 4	connector e.g.: JA3-6,5x19-E16/nut	

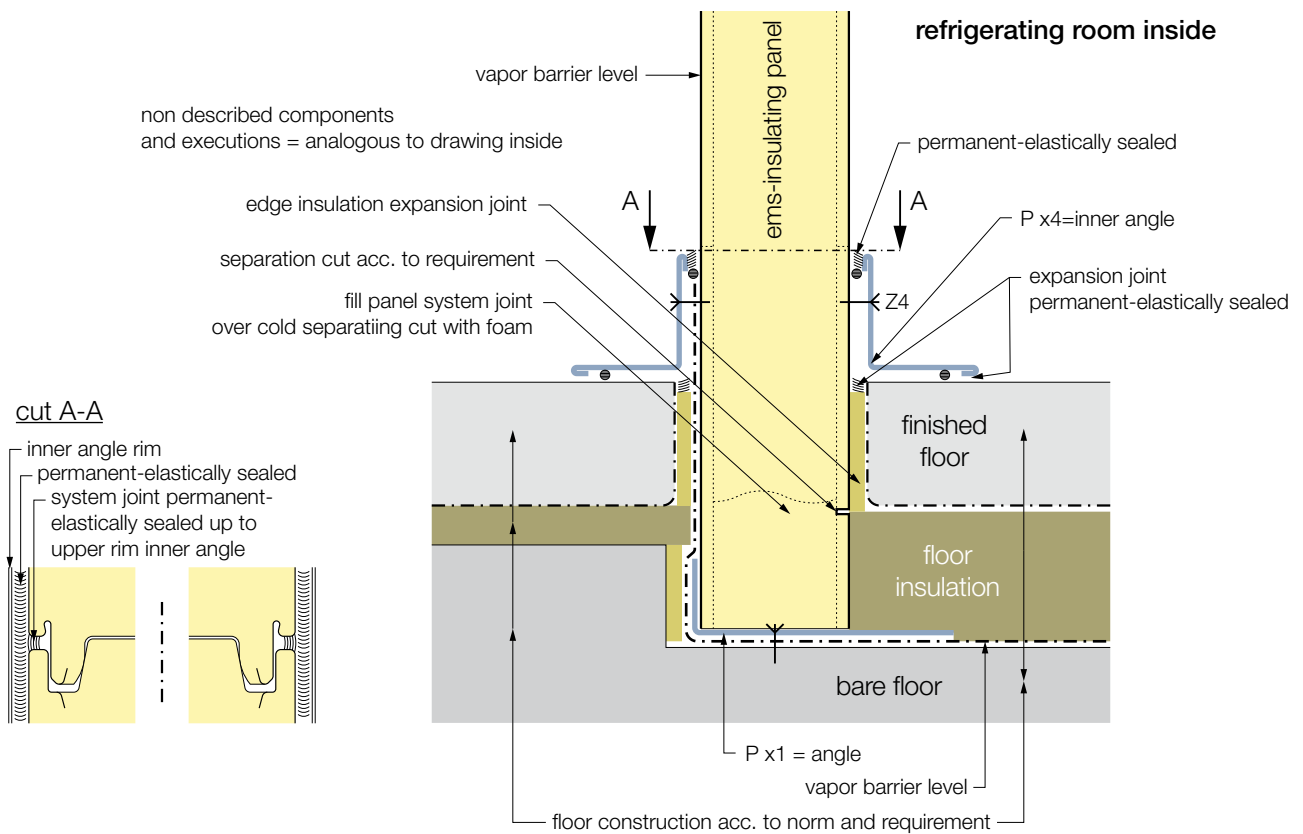
RS = right-hand thread = LS = left-hand thread

Character, arrangement, quantity of the fastener, connector, belts etc.: designated according to statics and technical regulations. General remark (liability): The indications in these schematic diagrams serve for description. Conventions concerning certain characteristics or certain applications always require special written agreements. Status 07/2018 – subject to technical modifications.

ems-isolier® coldstore panels

construction details

// Detail No. 9 – Foot with floor insulation



legend

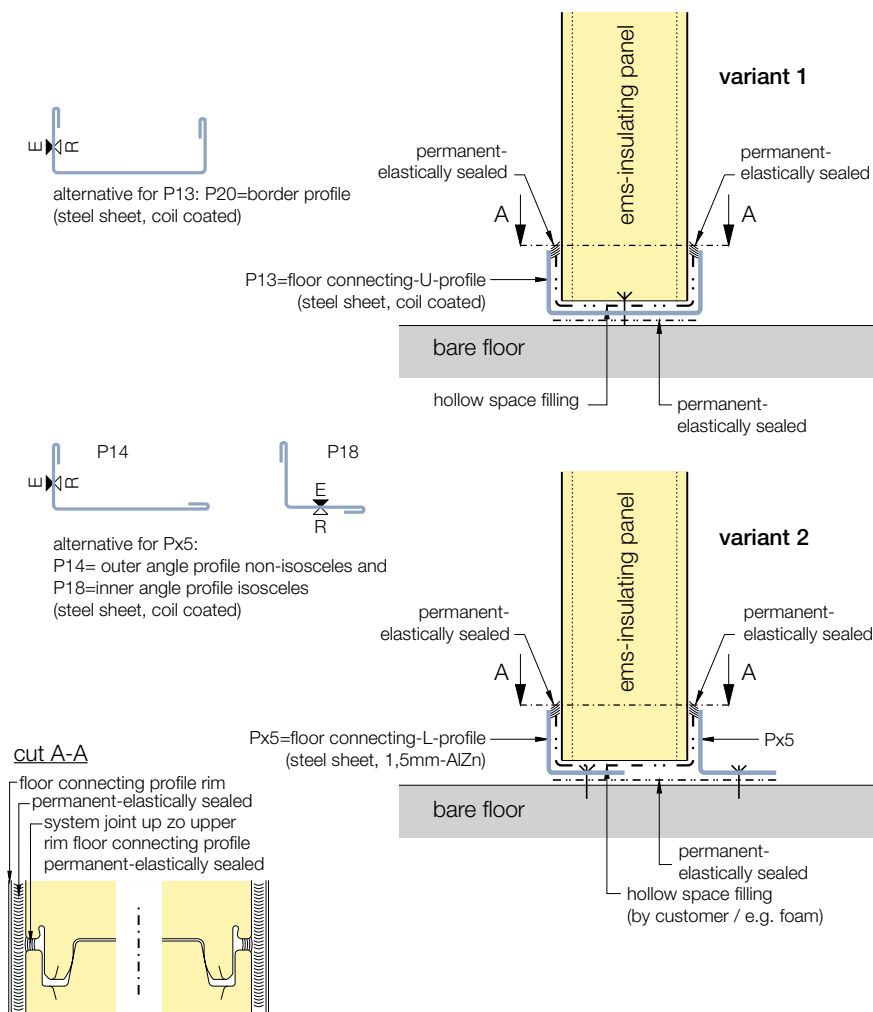
item	description	article no.	item	description	article no.
P x1	angle	if necessary	Z 4	connector e.g.: JA3-6,5x19-E16/nut	
P x4	inner angle	if necessary			

Character, arrangement, quantity of the fastener, connector, belts etc.: designated according to statics and technical regulations. General remark (liability): The indications in these schematic diagrams serve for description. Conventions concerning certain characteristics or certain applications always require special written agreements. Status 07/2018 – subject to technical modifications.

ems-isolier® coldstore panels

construction details

// Detail No. 10 – Foot without floor insulation



legend

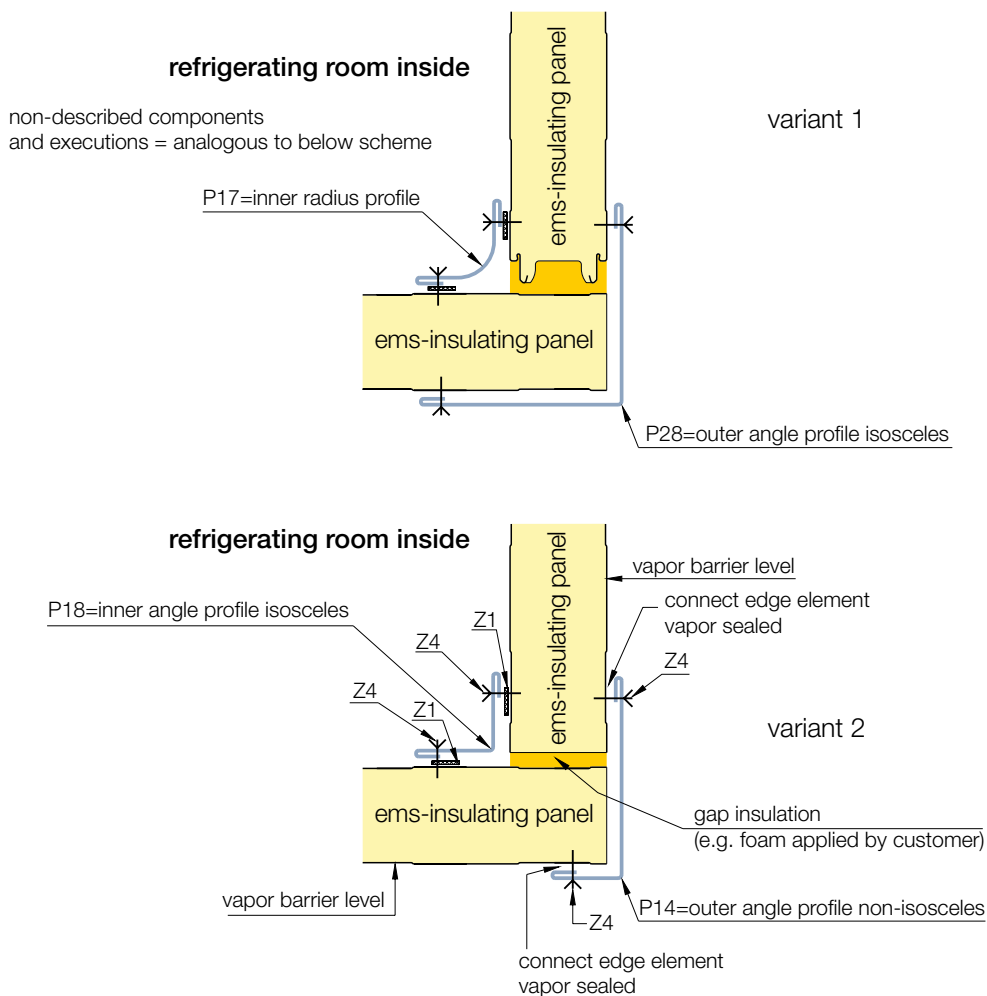
item	description	article no.	item	description	article no.
P 13	floor connecting-U-profile	71011 ff.	P 20	bordering profile	71151 ff.
P 14	outer angle non-isoceles	71031 ff.	P x5	floor connecting-L-profile	if necessary
P 18	inner angle isoceles	71140 ff.			

Character, arrangement, quantity of the fastener, connector, belts etc.: designated according to statics and technical regulations. General remark (liability): The indications in these schematic diagrams serve for description. Convenants concerning certain characteristics or certain applications always require special written agreements. Status 07/2018 – subject to technical modifications.

ems-isolier® coldstore panels

construction details

// Detail No. 11 – Edge



legend

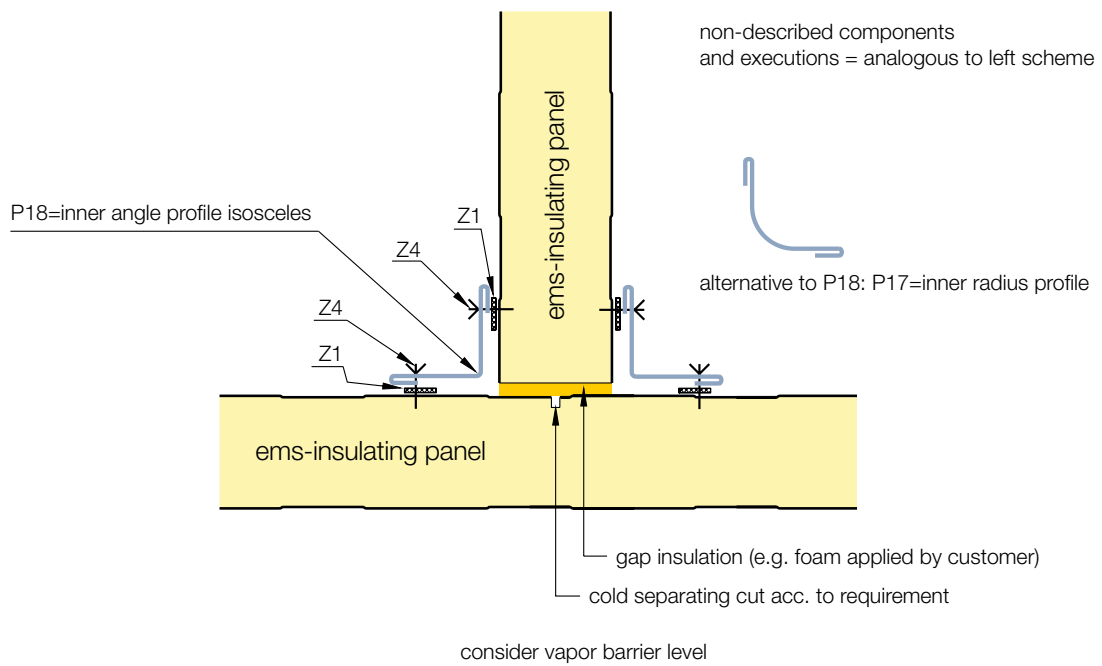
item	description	article no.	item	description	article no.
P 14	outer angle non-isosceles	71031 ff.	P 28	outer angle isosceles	71041 ff.
P 17	inner radius profile	71136	Z 1	compression gasket self-adhesive on one side e.g.: 15x10/2	
P 18	inner angle isosceles	71140 ff.	Z 4	connector e.g.: JA3-6,5x19-E16/nut	

Character, arrangement, quantity of the fastener, connector, belts etc.: designated according to statics and technical regulations. General remark (liability): The indications in these schematic diagrams serve for description. Conventions concerning certain characteristics or certain applications always require special written agreements. Status 07/2018 – subject to technical modifications.

ems-isolier® coldstore panels

construction details

// Detail No. 12 – T-connection



legend					
item	description	article no.	item	description	article no.
P 17	inner radius profile	71136	Z 1	compression gasket self-adhesive on one side e.g.: 15x10/2	
P 18	inner angle isosceles	71140 ff.	Z 4	connector e.g.: JA3-6,5x19-E16/nut	

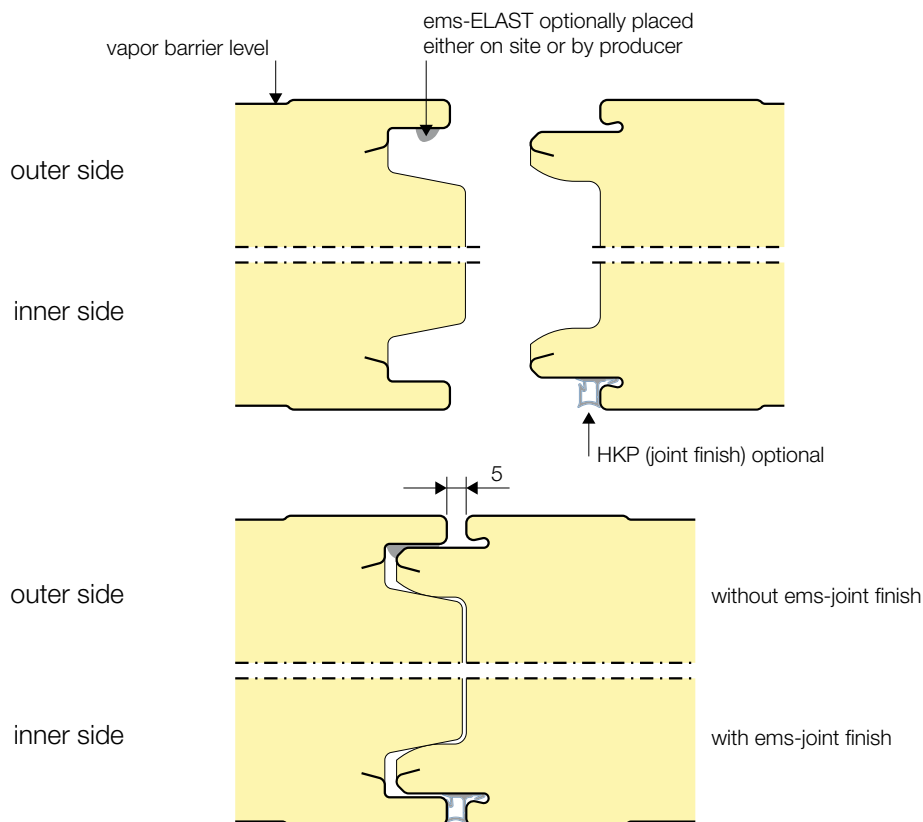
Character, arrangement, quantity of the fastener, connector, belts etc.: designated according to statics and technical regulations. General remark (liability): The indications in these schematic diagrams serve for description. Conventions concerning certain characteristics or certain applications always require special written agreements. Status 07/2018 – subject to technical modifications.

ems-isolier® coldstore panels

construction details

// Detail No. 13 – Labyrinth joint – refrigerating room joint

Standard version: ems insulating panel with labyrinth joint (refrigerating room joint).
 HKP and ems-ELAST are additional features available on request.



legend					
item	description	article no.	item	description	article no.
	HKP (joint finish)	different colours available		ems-ELAST cartridge	59788
	ems-ELAST by producer	57616			

Character, arrangement, quantity of the fastener, connector, belts etc.: designated according to statics and technical regulations. General remark (liability): The indications in these schematic diagrams serve for description. Conventions concerning certain characteristics or certain applications always require special written agreements. Status 07/2018 – subject to technical modifications.